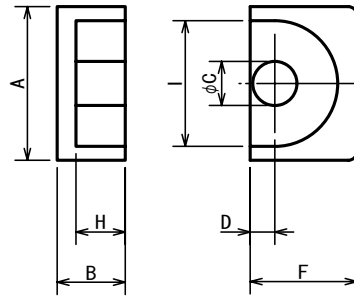


EP – Type Cores



Cores	Dimensions (mm)							Weight (g/set)
	A	B	ϕC	D	F	H	I	
FEP-5	6.0±0.15	2.8±0.05	1.7±0.1	0.9±0.1	3.8±0.1	2.0±0.1	4.4±0.15	0.5
FEP-5L	6.0±0.15	3.0±0.05	1.7±0.1	0.9±0.1	3.8±0.1	2.2±0.1	4.4±0.15	0.5
FEP-7	9.2±0.2	3.75±0.15	3.3±0.1	1.7±0.1	6.35±0.15	2.65±0.15	7.4±0.2	1.4
FEP-7/7.4	9.2±0.2	3.7±0.05	3.3±0.1	1.7±0.1	6.35±0.15	2.6±0.1	7.4±0.2	1.4
FEP-10	11.5±0.3	5.1±0.15	3.3±0.15	1.85±0.1	7.65±0.2	3.7±0.1	9.4±0.2	2.8
FEP-10/7.5	10.0±0.2	4.1±0.1	4.8±0.15	2.4	7.5±0.2	2.8±0.1	8.4±0.2	2.2
FEP-13	12.5±0.3	6.42±0.15	4.35±0.15	2.47	8.8±0.2	4.6±0.1	10.0±0.3	5.1
FEP-13X	12.5±0.3	6.425±0.075	4.35±0.15	2.4±0.1	8.8±0.2	4.6±0.1	10.0±0.3	5.1
FEP-17	18.0±0.4	8.4±0.2	5.68±0.18	3.3	11.0±0.25	5.65±0.15	12.0±0.4	12.0
FEP-20	24.0±0.5	10.7±0.1	8.75±0.25	4.5±0.2	14.95±0.35	7.15±0.15	16.5±0.4	28.0

Cores	Material	AL [nH/N ²]	Effective Parameter					
			$\Sigma \ell / A$ (mm ⁻¹)	Ae (mm ²)	ℓ_e (mm)	Ve (mm ³)	Acp (mm ²)	Acw (mm ²)
FEP-5	NC-2H	470 ± 25%	3.06	3.0	9.1	27.0	2.3	5.4
	NC-1L	540 ± 25%						
FEP-5M	NC-5Y	* 900min.	3.06	3.0	9.1	27.0	2.3	5.4
	NC-10H	* 1400min.						
FEP-5L	NC-2H	450 ± 25%	3.42	3.0	10.1	30.1	2.3	5.9
	NC-1L	510 ± 25%						
FEP-5LM	NC-5Y	* 850min.	3.42	3.0	10.1	30.1	2.3	5.9
	NC-10H	* 1350min.						
FEP-7	NC-2H	1200 ± 25%	1.52	10.0	15.7	160.0	9.0	11.0
	NC-1L	1300 ± 25%						
FEP-7M	NC-5Y	* 2000min.	1.52	10.0	15.7	160.0	9.0	11.0
	NC-10H	* 4000min.						
FEP-7/7.4	NC-2H	1200 ± 25%	1.52	10.0	15.7	160.0	9.0	11.0
	NC-1L	1300 ± 25%						
FEP-7/7.4M	NC-5Y	* 2000min.	1.52	10.0	15.7	160.0	9.0	11.0
	NC-10H	* 4000min.						
FEP-10	NC-2H	1000 ± 25%	1.7	11.0	19.2	220.0	9.0	23.0
	NC-1L	1200 ± 25%						
FEP-10M	NC-5Y	* 2100min.	1.7	11.0	19.2	220.0	9.0	23.0
	NC-10H	* 3630min.						
FEP-10/7.5	NC-2H	1950 ± 25%	0.98	19.8	19.5	386.1	18.1	10.1
	NC-1L	2320 ± 25%						
FEP-10/7.5M	NC-5Y	* 3700min	0.98	19.8	19.5	386.1	18.1	10.1
	NC-10H	* 5800min						
FEP-13	NC-2H	1600 ± 25%	1.2	20.0	24.7	470.0	14.9	26.0
	NC-1L	1700 ± 25%						
FEP-13M	NC-5Y	* 3100min.	1.2	20.0	24.7	470.0	14.9	26.0
	NC-10H	* 5200min.						
FEP-13X	NC-2H	1600 ± 25%	1.2	20.0	24.7	470.0	14.9	26.0
	NC-1L	1700 ± 25%						
FEP-13XM	NC-5Y	* 3100min.	1.2	20.0	24.7	470.0	14.9	26.0
	NC-10H	* 5200min.						
FEP-17	NC-2H	2500 ± 25%	0.8	34.0	28.7	970.0	25.0	36.0
	NC-1L	3000 ± 25%						
FEP-17M	NC-5Y	* 4800min.	0.8	34.0	28.7	970.0	25.0	36.0
	NC-10H	* 8500min.						
FEP-20	NC-2H	4000 ± 25%	0.5	78.0	39.8	3120.0	60.1	55.4
	NC-1L	5080 ± 25%						
FEP-20M	NC-5Y	* 7000min.	0.5	78.0	39.8	3120.0	60.1	55.4
	NC-10H	* 13500min.						

Notes:

Test Conditions : 1kHz, 0.5mA, 100Ts

Core Gapping : Gapped core is available on request.

ご注文によりギャップ付コアも用意します。

* Mark : Mirror Lapping