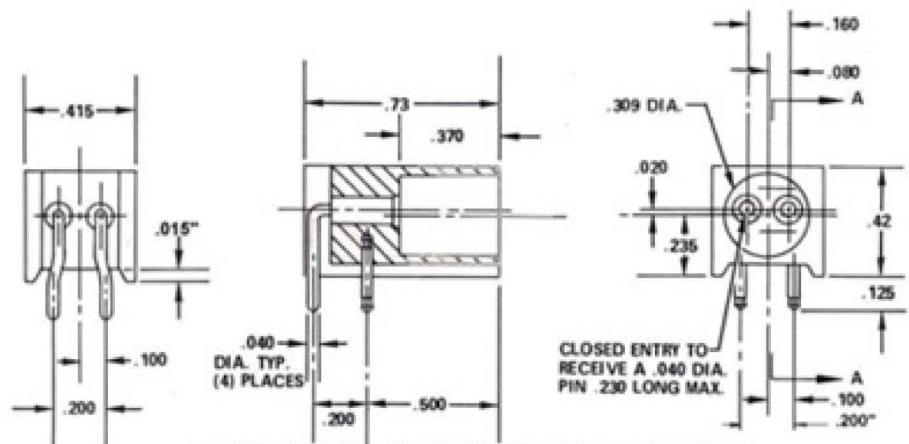
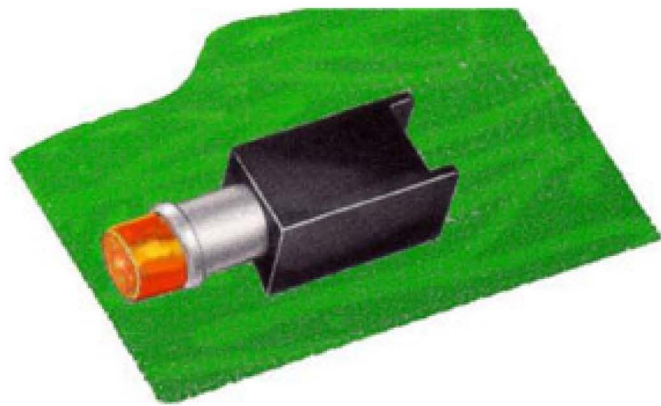


### Q-Series Sockets

Mates With Eldema C-Lites

The Eldema Q-82-4p socket is for direct installation onto printed circuit boards. It is slightly raised at the pins to clear any eyelets on the board. The terminals are solder-finished. The front two pins are mounting pins to assist in anchoring the part; the rear two are the lamp connection point with the C-Lites pins insure positive electrical connections. The molded phenolic socket body has a dielectric rating of 500V RMS.



Q-082-4P PRINTED CIRCUIT BOARD SOCKET